

OWNER'S MANUAL



Model: PFUPPP2528251M10

***1/4 HP • 3450 RPM • 60 Hz
Submersible Utility Pump***



Power-Flo Pumps & Systems

a Power-Flo Technologies company

General Safety Information

Before installation, read the following instructions carefully. Failure to follow instruction and Safety information could cause serious bodily injury, death and/or property damage. Each Power-Flo pump is individually factory tested to insure proper performance. Closely following these instructions will eliminate potential operating problems, assuring years of trouble-free service.

IMPORTANT - Power-Flo Pumps and Systems is not responsible for losses, injury or death resulting from failure to observe these safety precautions, misuse, abuse or misapplication of pumps or equipment.



⚠ DANGER Do not pump flammable or explosive liquids such as oil, gasoline, kerosene, ethanol, etc. Do not use in the presence

of flammable or explosive vapors. Using this pump with or near flammable liquids can cause an explosion or fire, resulting in property damage, serious personal injury, and/or death.



⚠ WARNING ALWAYS disconnect the power to the pump before servicing.



⚠ CAUTION Release all pressure and drain all water from the system before servicing any component.



⚠ DANGER Do not touch the motor housing during operation. The motor is designed to operate at high temperatures. Do not disassemble the motor housing.



⚠ DANGER Do not handle the pump or pump motor with wet hands or when standing on a wet or damp surface, or in water before disconnect the power.



⚠ WARNING Secure the discharge line before starting the pump. An unsecured discharge line will whip, possibly causing personal injury, and/or property damage.



⚠ DANGER Extension cords may not deliver sufficient voltage to the pump motor. Extension cords present a life threatening safety hazard if

the insulation becomes damaged or the connection ends fall into water. The use of an extension cord to power this pump is not permitted.



⚠ WARNING Wear safety goggles at all times when working with pumps.



⚠ WARNING This unit is designed only for use on 115 volts (single phase), 60 Hz, and is equipped with an approved 3-conductor cord and 3-prong grounded plug. Do not remove the ground pin under any circumstances. The 3-prong plug must be directly inserted into a properly installed and grounded 3-prong, grounding-type receptacle. Do not use this pump with a 2-prong wall outlet. Replace the 2-prong outlet with a properly grounded 3-prong receptacle (a GFCI outlet) installed in accordance with the National Electrical Code and local codes and ordinances. All wiring should be performed by a qualified electrician.



⚠ WARNING Protect the electrical cord from sharp objects, hot surfaces, oil, and chemicals. Avoid kinking the cord. Do not use damaged or worn cords.



⚠ WARNING Failure to comply with the instruction and designed operation of this unit may void the warranty. **ATTEMPTING TO USE A DAMAGED PUMP** can result in property damage, serious personal injury, and/or death.



⚠ WARNING Ensure that the electrical circuit to the pump is protected by a 10 Amp fuse or circuit breaker.



Do not lift the pump by the power cord.



⚠ CAUTION Know the pump and its applications, limitations, and potential hazards.

IMPORTANT! - Secure the pump to a solid base. This will aid in keeping the pump in a vertical orientation. This is critical in keeping the pump operating at maximum efficiency. It will also help prevent the pump from clogging resulting in premature failure.

IMPORTANT! - Periodically inspect the pump and system components to ensure the pump suction screen is free of mud, sand, and debris. Disconnect the pump from the power supply before inspecting.



⚠ WARNING Follow all local electrical and safety codes, along with the National Electrical Code (NEC). In addition, all Occupational Safety and Health Administration (OSHA) guidelines must be followed.



⚠ WARNING The motor of this pump has a thermal protector that will trip if the motor becomes too hot. The protector will reset itself once the motor cools down and an acceptable temperature has been reached. The pump may start unexpectedly if it is plugged in.



⚠ CAUTION Ensure the electrical power source is adequate for the requirements of the pump.



⚠ CAUTION Before using the pump, check the hose for holes or excess wear, which could cause leaks, and ensure the hose is not kinked or making sharp angles. A straight hose allows the pump to move the greatest amount of water quickly, and also check that all hose connections are tight to minimize leaks.

IMPORTANT! - This pump is made of high-strength, corrosion-resistant materials. It will provide trouble-free service for a long time when properly installed, maintained, and used. However, inadequate electrical power to the pump, dirt, or debris may cause the pump to fail.



WARNING:
CANCER AND REPRODUCTIVE HARM-
WWW.P65WARNINGS.CA.GOV

® Power-Flo is a registered trademark of Power-Flo Technologies Inc.
Alteration Rights Reserved. 3/15, 8/15, 9/2020, 1/2021



Power-Flo Pumps & Systems
a Power-Flo Technologies company

Power-Flo Pumps & Systems • 877-24PUMPS • www.powerflopumps.com

Specifications

Features:

Portable submersible utility pump for water removal or emptying shallow flooded areas.

- **DISCHARGE:** 1" NPTM, Vertical, with 3/4" Garden Hose Adapter
- **LIQUID TEMPERATURE:** 32°-77°F
- **MOTOR HOUSING:** Corrosion-resistant, reinforced Thermoplastic with T-Handle for easy portability.
- **IMPELLER:** Corrosion-resistant, reinforced Thermoplastic
- **SUCTION PLATE:** Corrosion-resistant, reinforced Thermoplastic, Bottom suction design filters debris and removes water down to 1/8"
- **SHAFT:** Stainless Steel
- **HARDWARE:** Stainless steel
- **GASKET:** Rubber
- **SEAL:** Single mechanical, rubber and stainless steel
- **UPPER BEARING:** Single row, ball, oil lubricated
- **LOWER BEARING:** Single row, ball, oil lubricated
- **POWER CORD:** SJTW, 18AWG/3C Cord, with plug. 10 ft long
- **MOTOR:** Energy efficient Permanent Split Capacitor (PSC), Oil Filled, Class B insulation, Continuous duty (water depth must be at least 6" to prevent motor from overheating), Auto reset thermal overload protector, Circuit requirements 10 AMPS.
- **WARRANTY:** 3 year



Submersible Utility Pump 1" NPT Discharge, 1/8" Spherical Solids Manual Operation

MODEL	HP	Hz	Volts/Ph	RPM	FL AMPS	Cord Length	Wt.
PFUPPP2528251M10	1/4	60	115/1	3450	2.3	10 ft	4.8 lbs

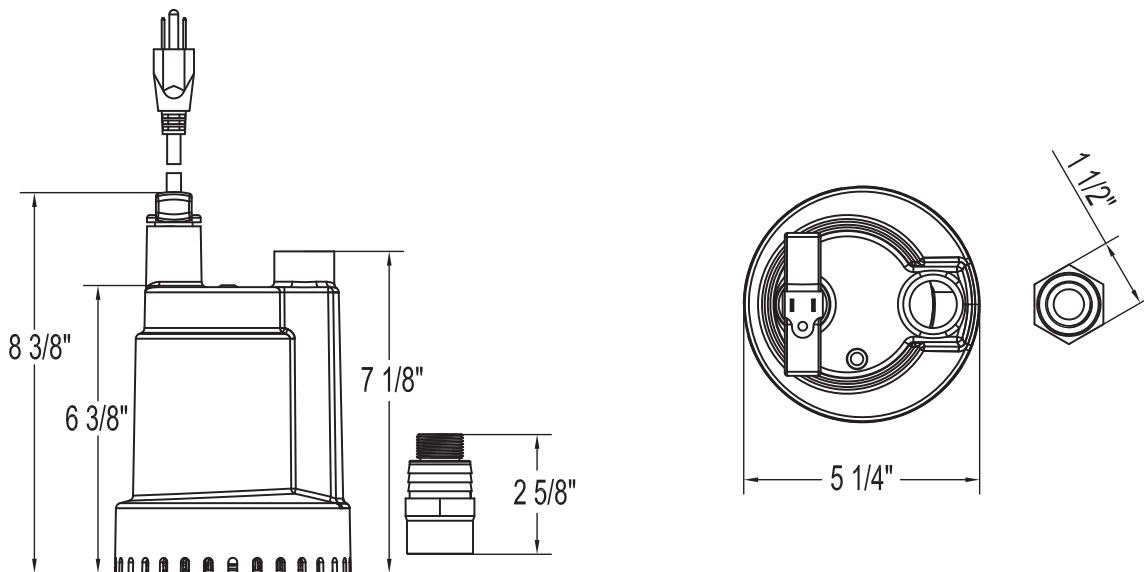
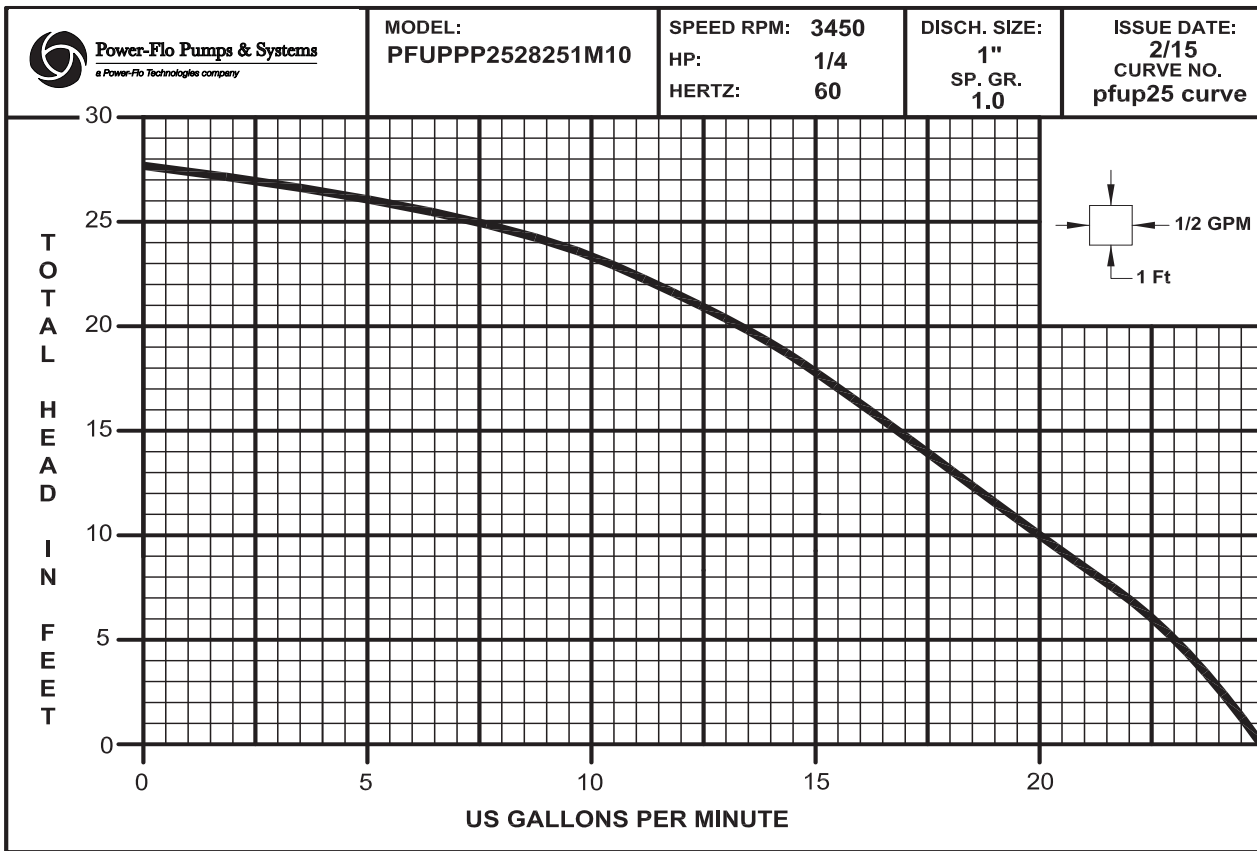
HEAD in Ft	0 Ft	5 Ft	10 Ft	15 Ft	20 Ft	25 Ft	Max Lift	Max Pressure
FLOW Gallon/Minute	25	23	20	16	13	8	28 Ft	12.4 psi
FLOW Gallon/Hour	1500	1370	1190	960	780	500		

PF	TYPE U, SP, SW	Motor Housing P, C	Impeller Type P, C	Suction Plate Type P, C	Motor HP 25, 33, 50, 75, 1	30	50	Voltage 1 or 2	Float Switch Type M, F, T	Cord Length 10, 15
Power-Flo	U = Utility SP = Sump Pump SW = Sewage Pump	P = Plastic C = Cast Iron	P = Plastic C = Cast Iron	P = Plastic C = Cast Iron	25 = 1/4 HP 33 = 1/3 HP 50 = 1/2 HP 75 = 3/4 HP 1 = 1 HP	Shut Off Head (ft)	Max Flow (Gal)	1 = 115 V 2 = 230V	M = Manual F = Fixed Vertical T = Tethered	10 Ft 25 Ft

EXAMPLE: PFSPCPC3330501T10 - Power-Flo Pumps - Sump Pump - Cast Iron Motor Housing - Plastic Impeller - Cast Iron Suction Plate - 1/3HP - 30" Shut Off Head - 50GPM Max Flow - 115 Volt - Tethered Float - 10' Cord



Performance & Dimensions



Pre-Installation

APPLICATION

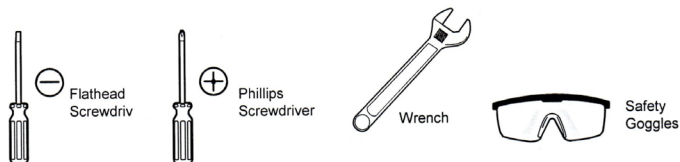
This submersible utility pump is designed for water removal applications. Pump water only with this pump. It can drain or remove water from the following: pits, sinks, window wells, basements, swimming pool covers, boats, low spot in yards, or other flooded areas.

This pump has not been tested or approved for use in swimming pools or in salt-water marine areas. This pump is not designed to function as a permanently installed sump pump. It is also not engineered to be run continuously as a "fountain" or "waterfall" pump.

Do not use where water recirculates. Not designed for use as a swimming pool drainer.

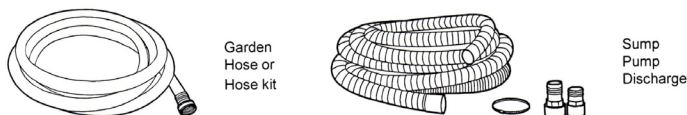
Operating water depth: minimum 1 in.

TOOLS REQUIRED



MATERIALS REQUIRED (NOT INCLUDED)

NOTE: The hose and hose kit are not shown to scale.

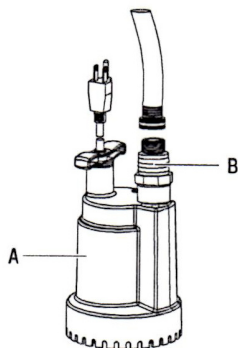


INSTALLATION

CAUTION: Always use the handle to lift the pump. Never use the power cord to lift the pump. To avoid skin burns, unplug the pump and allow time for it to cool after periods of extended use.

1. Connecting a 3/4 in. garden hose

Attach a 1 in. female adaptor (B) to the pump discharge. Attach a garden hose with a 3/4 in. garden hose thread (not included) to the adaptor.

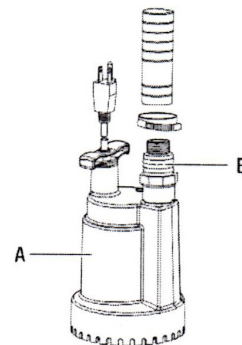


NOTE: Be sure the 3/4 in. garden hose thread connector has a rubber gasket to minimize water leaks.

NOTE: The larger the inside diameter and the shorter the length of hose, the less pressure that is lost (or the larger the flow rate).

2. Connecting a 1-1/4 in. hose kit

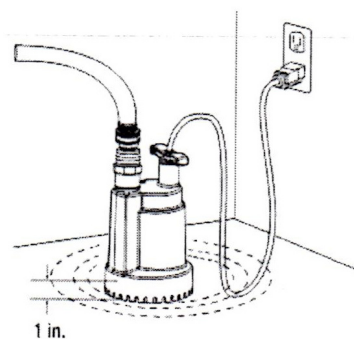
If you would prefer to use a 1-1/4 in. hose kit (not included) in order to pump water away more quickly. Attach the adaptor (B) to the pump (A) discharge. Securely attach the hose kit (not included) to the adaptor (B).



WARNING: Secure the discharge hose before plugging in the pump. An unsecured discharge hose may "whip" possibly causing personal injury, and/or property damage.

OPERATION

1. Plugging in the pump



Place the pump on a solid base in flooded area or any place that you would like to remove water. Plug the pump into a 115 volt GFCI power outlet.

WARNING: Do not handle the pump or pump motor with wet hands or when standing on a wet or damp surface, or in water.

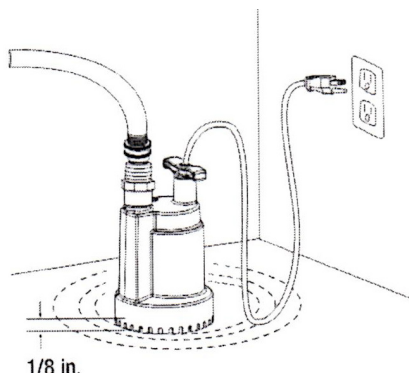
NOTE: Place upright on a solid base.



Installation & Operation

NOTE: The pump must be standing in at least 1 in. of water before you start it. The shaft seal is water lubricated and may be damaged if the pump runs dry.

2. Operating the pump



Allow the pump to run and monitor its progress. Unplug the pump when it has removed water down to approximately 1/8 in. Remove the pump and hose from the location when finished pumping. The hose still has water that can drain back through the pump. Remove remaining water with a squeegee, mop, sponge, towel, wet/dry vac, etc.

CAUTION: Do not run the pump dry. Operating the pump without water will cause damage to the seals and will cause the pump to fail, thereby voiding the pump's warranty.

NOTE: After starting, the pump will lower the water level to 1/8 in. before losing suction. It will not pick up water less than 1/8 in. deep when running and will not operate successfully if started in only 1/8 in. of water.

Airlock

This pump is a centrifugal utility pump, designed to efficiently remove water. However, it cannot move air. If air is trapped inside the pump (a condition called "airlock"), the pump cannot pump water out even though the pump is completely submerged. This unit does not have an anti-airlock hole. When you use the pump, please drain the water out of the garden hose, keep the end of the hose out of the water, and plug in the power cord, starting the pump.

CARE AND CLEANING

CAUTION: Always use the handle to lift the pump. Never use the power cord to lift the pump. To avoid skin burns, unplug the pump and allow time for it to cool after periods of extended use.

Do - When the power is disconnected, inspect the pump suction screen and remove all debris, then plug the pump back into the grounded (GFCI) outlet.

Do Not - Do not disassemble the motor housing. This motor has **NO** repairable internal parts, and disassembly may cause leakage or dangerous electrical wiring issues. Do not lift up the pump by the power cord.

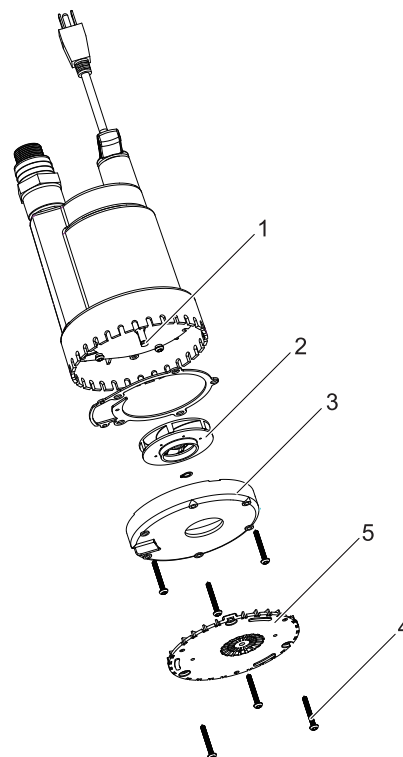
To clean a pump clogged with debris:

Unplug the pump from electrical power.

Remove debris from the screen (5).

Remove the screws (4) and take out the volute (3) from the pump and clean the debris on the shaft (1) and impeller (2).

Reassemble the volute (3).



Troubleshooting

Risk of electric shock. Always disconnect the pump from the power source before handling inspections or repairs.

Symptom	Possible Cause(s)	Corrective Action
Pump does not start	<ol style="list-style-type: none"> 1. The fuse is blow. 2. The breaker is tripped. 3. The plug is disconnected. 4. The plug is corroded. 5. The motor failed. 6. Ice or blockage has locked the impeller. 	<ol style="list-style-type: none"> 1. Replace the fuse. 2. Reset the breaker. 3. Secure the plug. 4. Clean the plug prongs. 5. Replace the pump. 6. Remove the blockage.
The pump is unable to pump out water	<ol style="list-style-type: none"> 1. The screen is blocked. 2. The hose is kinked, bent sharply, or coiled 3. There is airlock. 4. The hose length is too long. 5. The impeller is loose on the shaft. 6. The impeller is broken. 	<ol style="list-style-type: none"> 1. Clean the screen. 2. Straighten the hose. 3. Clean the anti-air lock hole. 4. Use a shorter hose. 5. Reassemble the impeller. 6. Replace the impeller.

NOTE: Power-Flo Pumps & Systems assumes no responsibility for damage or injury due to disassembly in the field. Disassembly of the pumps or supplied accessories other than at Power-Flo Pumps & Systems or its authorized service centers, automatically voids warranty.



3 YEAR WARRANTY

Manufacturer warrants, to the purchaser and subsequent owner during the warranty period, new pump product to be free from defects in material and workmanship under normal use and service, when properly used and maintained, for a period of 3 years from date of sale. The date of sale shall be determined by a dated sales receipt noting the model and serial number of the pump. The dated sales receipt must accompany the returned pump if the date of the return is more than 3 years from the date of manufacturer. Product will be repaired, replaced or remanufactured at Manufacturer's option. No allowance will be made for shipping charges, damages, labor or other charges that may occur due to product failure, repair or replacement. This warranty does not apply to and there shall be no warranty for any material or product that has been disassembled without prior approval of Manufacturer, subjected to misuse, misapplication, neglect, alteration, accident or act of God; that has not been installed, operated or maintained in accordance with Manufacturer's installation instructions; that has been exposed to outside substances including but not limited to the following: sand, gravel, cement, mud, tar, hydrocarbons, hydrocarbon derivatives (oil, gasoline, solvents, etc.), or other abrasive or corrosive substances, wash towels or feminine sanitary products, etc. in all pumping applications. The warranty set out in the paragraph above is in lieu of all other warranties expressed or implied; and we do not authorize any representative or other person to assume for us any other liability in connection with our products.

Contact Manufacturer at: 1-877-24PUMPS or www.powerflopumps.com, Attention: Customer Service Department, to obtain any needed repair or replacement of part(s) or additional information pertaining to our warranty. MANUFACTURER EXPRESSLY DISCLAIMS LIABILITY FOR SPECIAL, CONSEQUENTIAL OR INCIDENTAL DAMAGES OR BREACH OF EXPRESSED OR IMPLIED WARRANTY; AND ANY IMPLIED WARRANTY OF FITNESS FOR A PARTICULAR PURPOSE AND OF MERCHANTABILITY SHALL BE LIMITED TO THE DURATION OF THE EXPRESSED WARRANTY.

Some states do not allow limitations on the duration of an implied warranty, so the above limitation may not apply to you. Some states do not allow the exclusion or limitation of incidental or consequential damages, so the above limitation or exclusion may not apply to you. This warranty gives you specific legal rights and you may also have other rights which vary from state to state.

